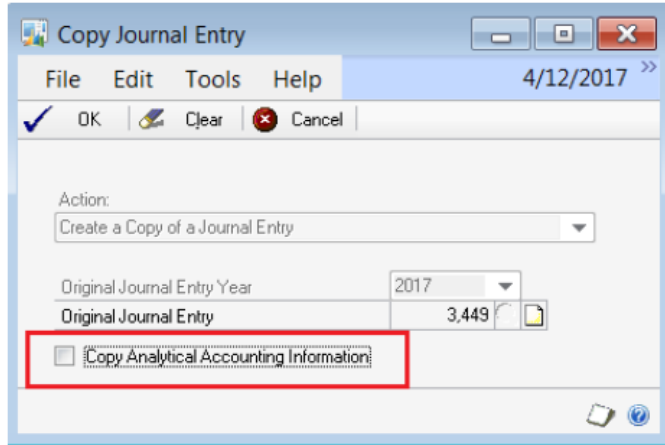
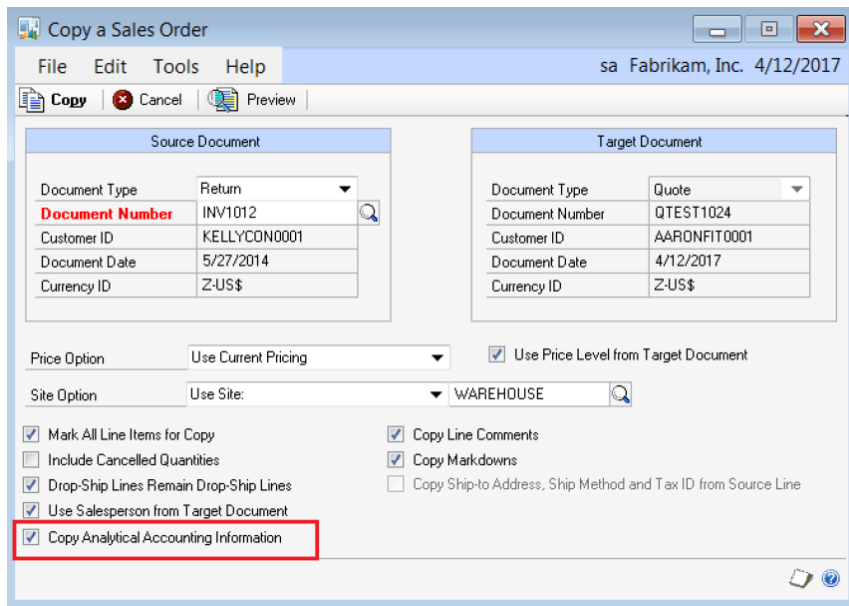


- The **Copy Journal Entry** window has a new option added titled **Copy Analytical Accounting Information**. If the original journal entry contains AA distribution information, then mark this option to have the AA data copied over to the new GL Journal document that is being copied to.



- The **Copy a Sales Order** window has a new option added titled **Copy Analytical Accounting Information**.



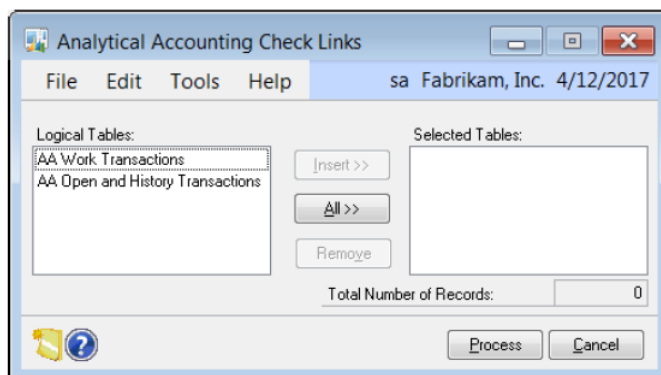
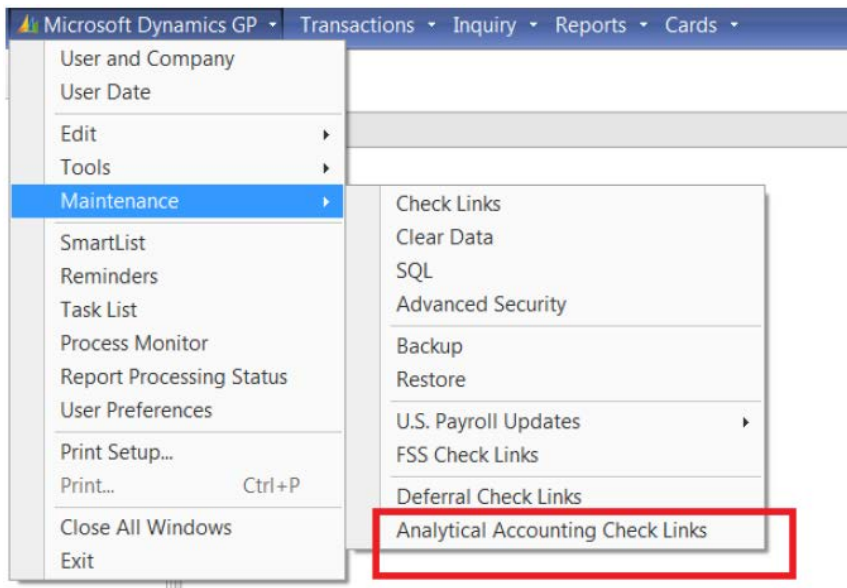
- The **Copy a Purchase Order** window has a new option added titled **Copy Analytical Accounting Information**.

The screenshot shows the 'Copy a Purchase Order' dialog box. The title bar indicates the user is 'sa Fabrikam, Inc.' and the date is '4/12/2017'. The window has a menu bar with 'File', 'Edit', 'Tools', and 'Help'. Below the menu bar is a toolbar with 'Copy', 'Cancel', and 'Preview' buttons. The main area contains several sections of fields:

- Source Information:** Source PO Number (with search icon), Source Vendor ID, Source Vendor Name, Source Type (dropdown), and Source Currency ID (dropdown).
- Vendor Information:** Vendor ID (CRUGEREN0001), Vendor Name (Cruger Engineering Company), Document Date (2/26/2016), Type (Standard dropdown), and Currency ID (Z-US\$ dropdown).
- Options:** Site Option (Use Source PO Sites dropdown), Cost Option (Use Vendor Cost dropdown), and a checkbox for 'Copy Landed Cost Group from Source PO Lines'.
- Dates:** Required Date, Promise Date, and Promise Ship Date, all set to 2/26/2016.
- Checkboxes:** 'Mark All Line Items for Copy' (checked), 'Include Cancelled Lines' (unchecked), 'Include Cancelled Quantities' (unchecked), and 'Copy Analytical Accounting Information' (unchecked, highlighted with a red box).

### Check Links for Analytical Accounting

- Check links should correct corrupt or missing AA data. AA data can get corrupt for various reasons, including user interference, power or connection interference while posting, prior quality issues, or importing of data from external sources.
- The Analytical Accounting Check Links window has been moved to a new location: click on **Microsoft Dynamics GP**, click on **Maintenance** and click on **Analytical Accounting Check Links**.



### Check Links Indicator

- A check link status field **AA\_CL\_Status** was added to AA distribution tables (AAG10001, AAG30001, AAG40001) in SQL Server Management Studio. This field will be set to 0 or 1 to be used to skip the check link process for the same set of records. The value will get set back to 0 when the record is moved between tables.

1 – Indicate the value for check links, which is already corrected for those set of records.

0 – Indicate the value for check links, which is not corrected for those set of records.