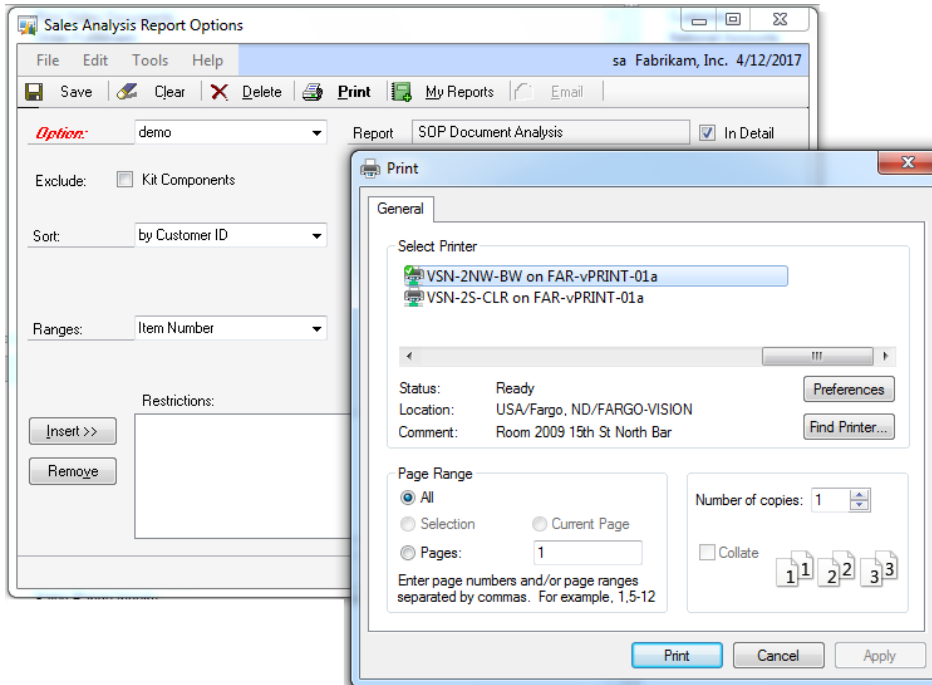


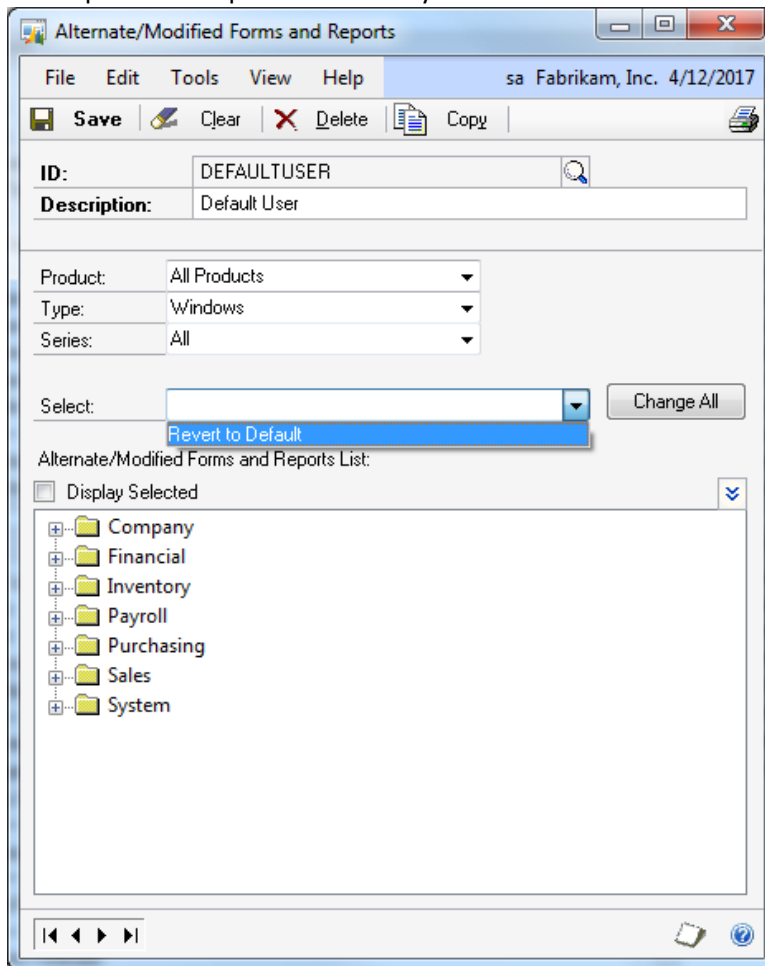
Select Printer at Print

- In Microsoft Dynamics GP 2010 and previous versions, you have to choose a printer prior to generating a report. This functionality differed from other applications. You would also have to remember to change the printer back to your default printer after you were done printing if desired.



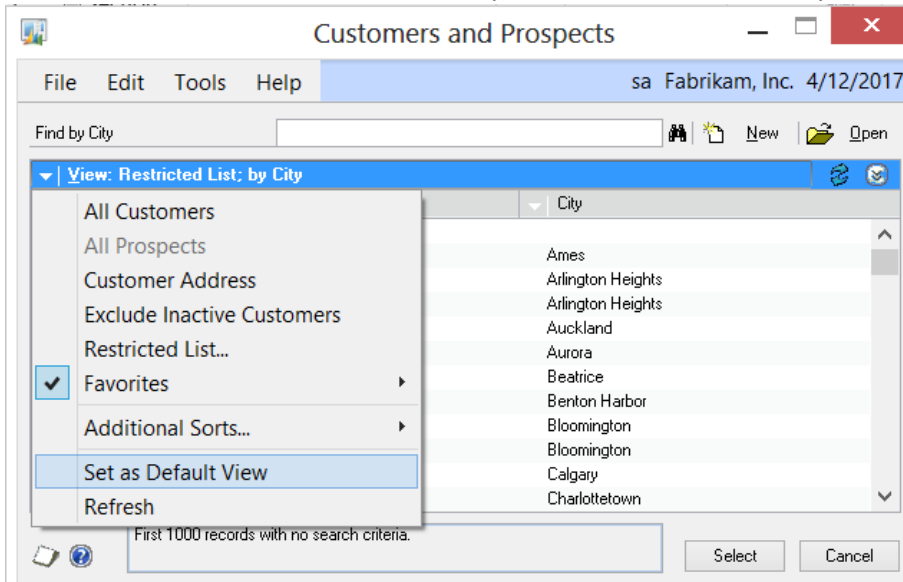
Enhancement to Alternate/Modified Forms and Reports

- In Microsoft Dynamics GP 2010 and previous versions, you only have the option for Product and Type. In the tree view, all modules would be listed out separately and you would need to select which product's report or window you wanted to use individually.



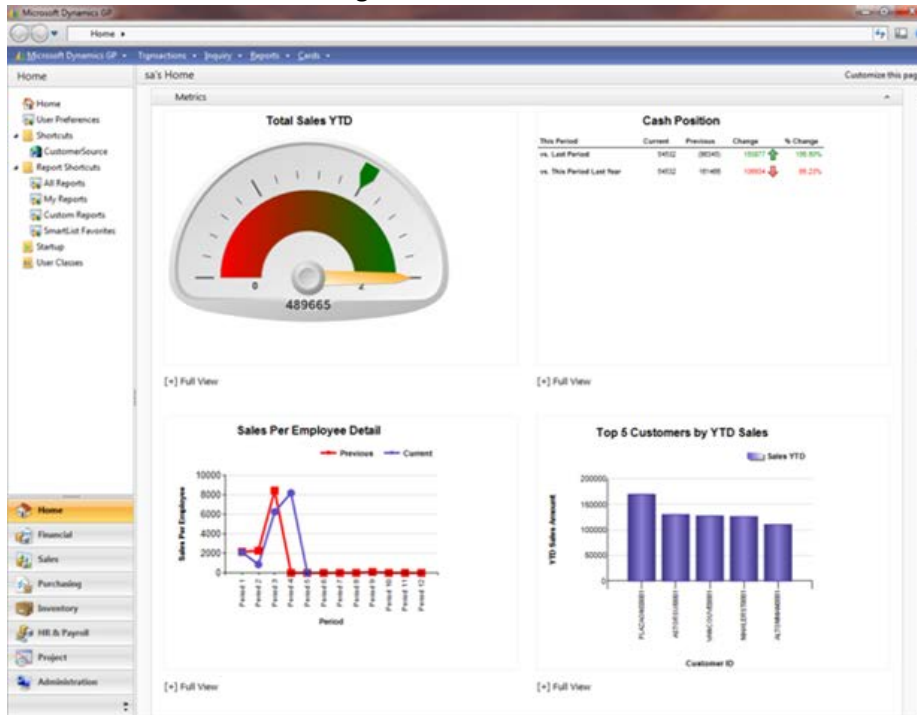
Set as Default View Saved

- On previous versions of Microsoft Dynamics GP, there was no functionality for saving the sort order of an Advanced Lookup once it had been closed.
- Set as Default View was new functionality introduced in Microsoft Dynamics GP 2010.



Home and Area Page

- Re-architected to run Windows Presentation Foundation (WPF).
- Outlook and Metrics are removed from the Home Page.
- After the upgrade to Microsoft Dynamics GP 2013, the column layout will default to **Two Column** and **Column Stack** of **Right**.
- Business Analyzer (replaces Metrics) is only available if SQL Server Reporting Services (SSRS) have been installed and configured.



Saved Batch Approval

- On previous versions of Microsoft Dynamics GP, who approved the batch was stored in the Posting Definitions Master (SY00500) table until the transaction was posted. Once posted, access to that information was lost. The Approval User ID and Approval Date is now stored in the general ledger data tables.

64-bit Outlook Capability

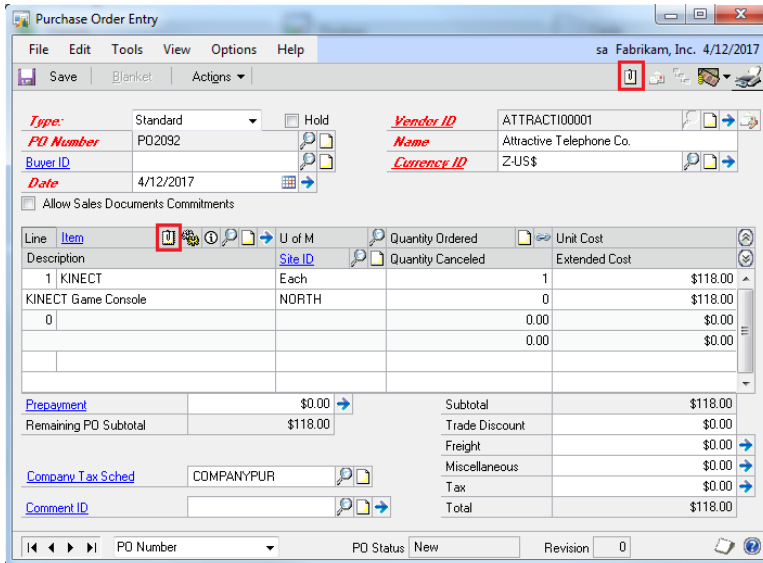
- On Microsoft Dynamics GP 2010, you could have the 64-bit version of Outlook installed. However, it could not be used for emailing documents.

Password Protect Email Output

- On Microsoft Dynamics GP 2010, if you wanted to password protect your document, you would need to set protection in Microsoft Word to restrict access to modifying the document.

Document Attach

- On previous versions, OLE notes could be used to store additional document information. Document Attach documents are stored within the company database and is being rolled out for select windows in GP 2013.



Purchase Order Entry

File Edit Tools View Options Help sa Fabrikam, Inc. 4/12/2017

Save Blanket Actions

Type: Standard Hold

PO Number: P02092

Buyer ID:

Date: 4/12/2017

Vendor ID: ATTRACT100001

Name: Attractive Telephone Co.

Currency ID: Z-US\$

Allow Sales Documents Commitments

Line	Item	U of M	Quantity Ordered	Quantity Canceled	Unit Cost	Extended Cost
1	KINECT	Each	1			\$118.00
	KINECT Game Console	NORTH				\$118.00
0			0.00			\$0.00
			0.00			\$0.00

Prepayment: \$0.00

Remaining PO Subtotal: \$118.00

Company Tax Sched: COMPANYPUR

Comment ID:

Subtotal: \$118.00

Trade Discount: \$0.00

Freight: \$0.00

Miscellaneous: \$0.00

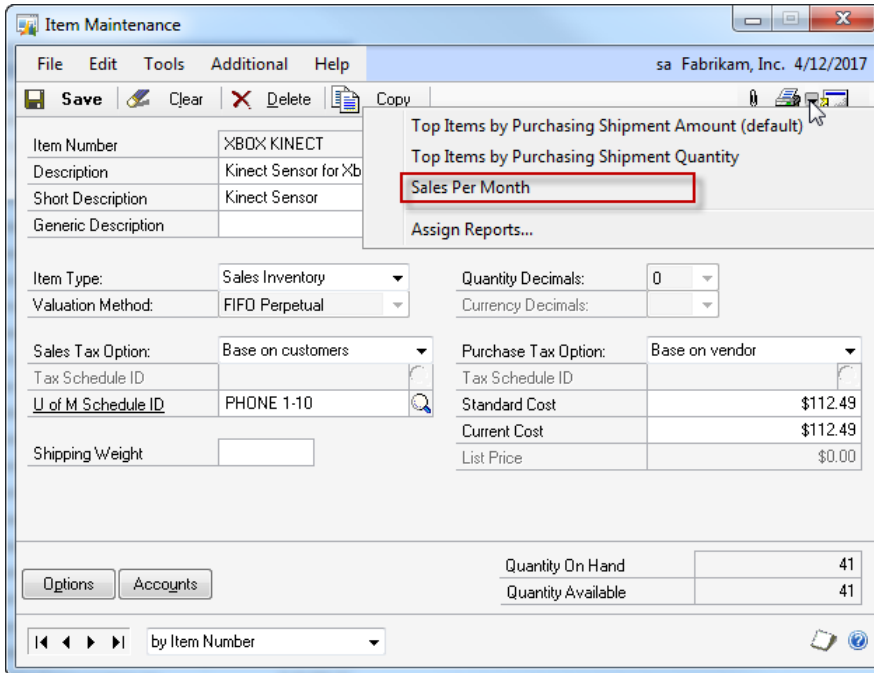
Tax: \$0.00

Total: \$118.00

PD Number: PD Status: New Revision: 0

SSRS Printing from Maintenance Windows

- On Microsoft Dynamics GP 2010, you are not able to print SSRS reports from maintenance windows. Instead, you would have to print them using the Report Lists.
- SQL Server Reporting Services must be deployed for the company in order for reports to print correctly from the maintenance screens.



Item Maintenance

sa Fabrikam, Inc. 4/12/2017

File Edit Tools Additional Help

Save Clear Delete Copy

Item Number: XBOX KINECT
Description: Kinect Sensor for Xb
Short Description: Kinect Sensor
Generic Description:

Item Type: Sales Inventory
Valuation Method: FIFO Perpetual
Sales Tax Option: Base on customers
Purchase Tax Option: Base on vendor
Tax Schedule ID:
U of M Schedule ID: PHONE 1-10
Shipping Weight:

Quantity Decimals: 0
Currency Decimals:

Standard Cost: \$112.49
Current Cost: \$112.49
List Price: \$0.00

Quantity On Hand: 41
Quantity Available: 41

Options Accounts

by Item Number